

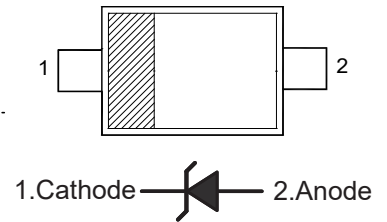


# BZX584C Series Silicon Planar Zener Diodes

## Features

- Total power dissipation: 150mW max
- Available in Lead Free Version
- Wide zener reverse voltage range:2.4V to 39V

SOD-523



## Absolute Maximum Ratings at $T_A = 25\text{ }^\circ\text{C}$

Parameter	Symbols	Value	Unit
Maximum Power Dissipation	$P_D$	150	mW
Junction Temperature	$T_J$	150	$^\circ\text{C}$
Storage Temperature Range	$T_{STG}$	-65 to +150	$^\circ\text{C}$

## Characteristics at $T_A = 25\text{ }^\circ\text{C}$

Parameter	Symbols	Max.	Unit
Forward Voltage at $I_F = 10\text{ mA}$	$V_F$	0.9	V



# BZX584C Series

## Silicon Planar Zener Diodes

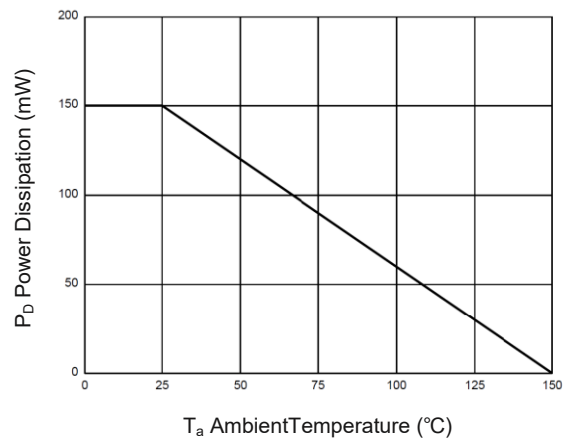
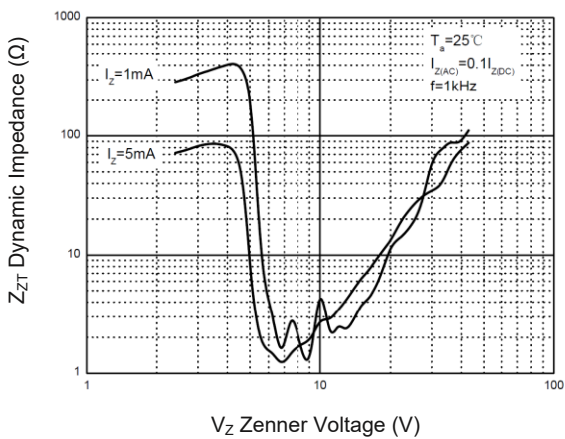
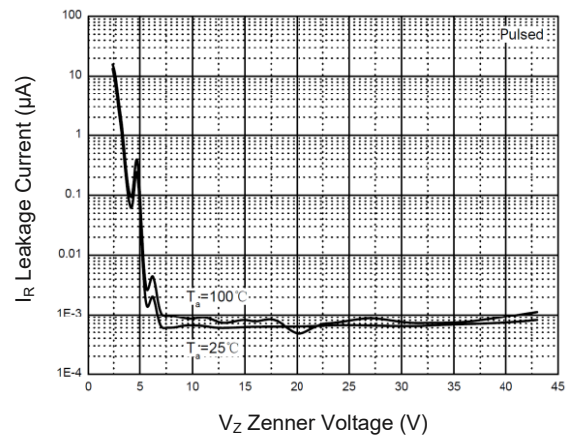
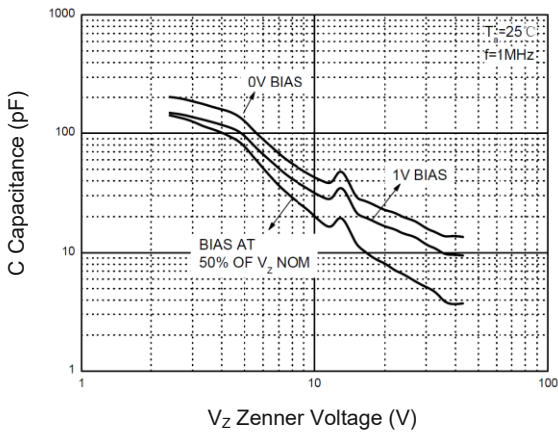
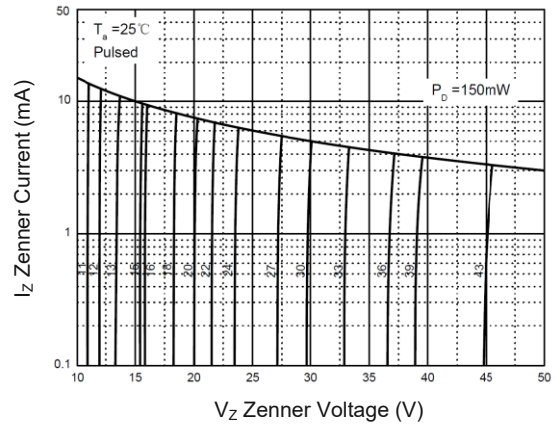
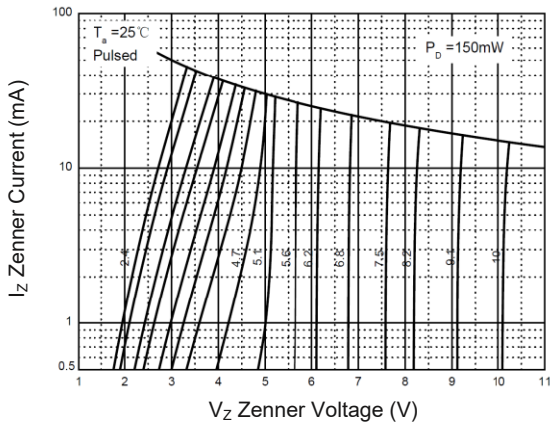
Characteristics at  $T_A = 25\text{ }^\circ\text{C}$

Type	Marking Code	Zener Voltage Range			$I_{ZT}$	Dynamic Impedance	$I_{ZK}$	Dynamic Impedance	Reverse Current	
		$V_{ZT}$ at $I_{ZT}$				$Z_{ZT}$ at $I_{ZT}$		$Z_{ZT}$ at $I_{ZK}$	$I_R$	at $V_R$
		Min.(V)	Nom.(V)	Max.(V)	(mA)	Max.( $\Omega$ )	(mA)	Max.( $\Omega$ )	Max.( $\mu\text{A}$ )	(V)
BZX584C2V4	Z11	2.2	2.4	2.6	5	100	1	600	50	1
BZX584C2V7	Z12	2.5	2.7	2.9	5	100	1	600	20	1
BZX584C3V0	Z13	2.8	3	3.2	5	95	1	600	10	1
BZX584C3V3	Z14	3.1	3.3	3.5	5	95	1	600	5	1
BZX584C3V6	Z15	3.4	3.6	3.8	5	90	1	600	5	1
BZX584C3V9	Z16	3.7	3.9	4.1	5	90	1	600	3	1
BZX584C4V3	Z17	4.0	4.3	4.6	5	90	1	600	3	1
BZX584C4V7	Z1	4.4	4.7	5.0	5	80	1	500	3	2
BZX584C5V1	Z2	4.8	5.1	5.4	5	60	1	480	2	2
BZX584C5V6	Z3	5.2	5.6	6.0	5	40	1	400	1	2
BZX584C6V2	Z4	5.8	6.2	6.6	5	10	1	150	3	4
BZX584C6V8	Z5	6.4	6.8	7.2	5	15	1	80	2	4
BZX584C7V5	Z6	7.0	7.5	7.9	5	15	1	80	1	5
BZX584C8V2	Z7	7.7	8.2	8.7	5	15	1	80	0.7	5
BZX584C9V1	Z8	8.5	9.1	9.6	5	15	1	100	0.5	6
BZX584C10	Z9	9.4	10	10.6	5	20	1	150	0.2	7
BZX584C11	Y1	10.4	11	11.6	5	20	1	150	0.1	8
BZX584C12	Y2	11.4	12	12.7	5	25	1	150	0.1	8
BZX584C13	Y3	12.4	13	14.1	5	30	1	170	0.1	8
BZX584C15	Y4	13.8	15	15.6	5	30	1	200	0.1	10.5
BZX584C16	Y5	15.3	16	17.1	5	40	1	200	0.1	11.2
BZX584C18	Y6	16.8	18	19.1	5	45	1	225	0.1	12.6
BZX584C20	Y7	18.8	20	21.2	5	55	1	225	0.1	14
BZX584C22	Y8	20.8	22	23.3	5	55	1	250	0.1	15.4
BZX584C24	Y9	22.8	24	25.6	5	70	1	250	0.1	16.8
BZX584C27	Y10	25.1	27	28.9	2	80	0.5	300	0.1	18.9
BZX584C30	Y11	28.0	30	32	2	80	0.5	300	0.1	21
BZX584C33	Y12	31.0	33	35	2	80	0.5	325	0.1	23.1
BZX584C36	Y13	34.0	36	38	2	90	0.5	350	0.1	25.2
BZX584C39	Y14	37.0	39	41	2	130	0.5	350	0.1	27.3



# BZX584C Series Silicon Planar Zener Diodes

## Typical Characteristic Curves





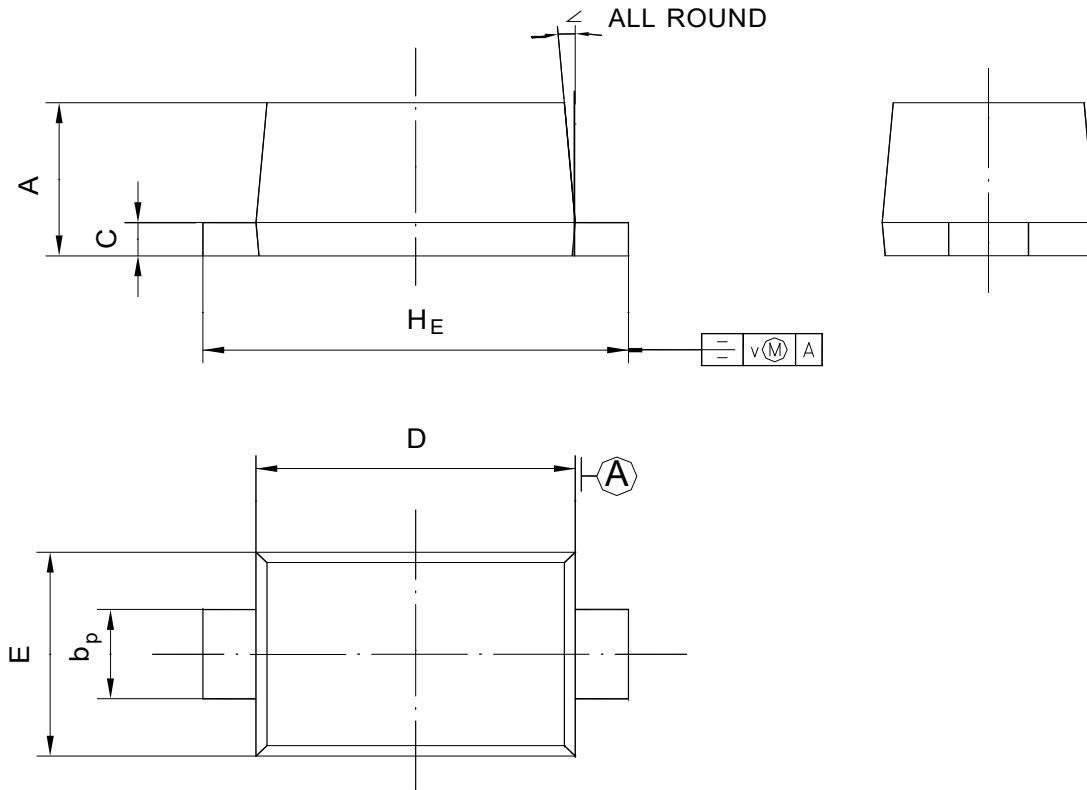
# BZX584C Series

## Silicon Planar Zener Diodes

### Package Outline

SOD-523

Dimensions in mm



UNIT	A	b <sub>p</sub>	C	D	E	H <sub>E</sub>	V	∠
mm	0.70 0.60	0.4 0.3	0.135 0.100	1.25 1.15	0.85 0.75	1.7 1.5	0.1	5°